

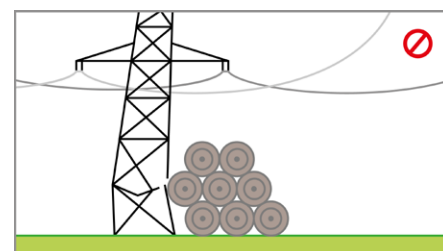


Working near lines

The Swissgrid grid consists of around 12,000 pylons and 6,700 kilometres of lines. Part of this crosses cultivated land or passes close to populated areas. Swissgrid's grid infrastructure meets the highest safety standards. However, a few safety rules need to be observed during planning activities and work near lines. The most important of these are included in this flyer.

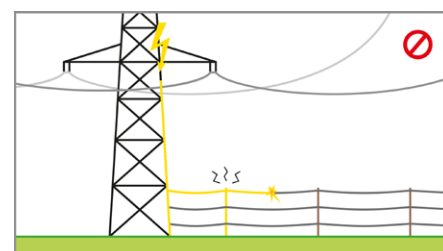
Do not store any materials under pylons and lines.

Electricity pylons must be accessible around the clock – for example, to quickly rectify faults. Depositing heavy materials, such as silo bales, gravel or rubble at the base of a pylon can weaken its stability. If flammable materials such as wood catch fire, pylons may be damaged, or lines could fall, causing risk of electric shock.



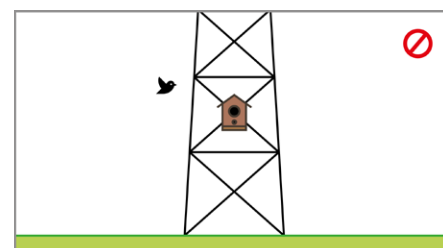
Take care when installing electric livestock fences near pylons.

Never fasten a livestock fence to an electricity pylon. A lightning strike or short circuit in the line could cause a fatal electricity flow for people and animals. If you install a livestock fence near a line, this must be earthed until it is commissioned: the fence may become electrically charged due to the line's magnetic field and cause an electric shock.



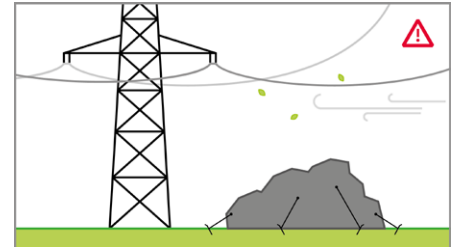
Constructions on or under the pylons are prohibited or subject to approval.

Do not attach constructions, such as bird houses or huts, to pylons. They impair the accessibility and stability of pylons. The installation of small ecological structures, such as biotopes, under pylons is possible but is subject to approval.



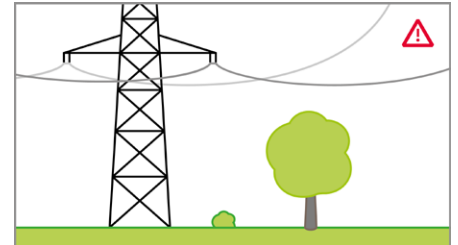
Secure covering materials against strong wind gusts.

If you cover construction materials, wood or vegetable fields with non-woven material or tarpaulins in the vicinity of lines or electricity pylons, they must be well-protected against wind gusts. If they are blown away by the wind and hit a line there is a risk of faults or electric shocks.



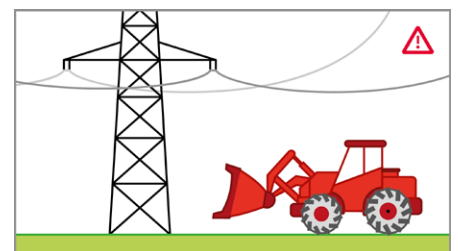
Take care when planting trees near lines.

A tree planted in an incorrect location can become a hazard over the years – branches that are close to the line can cause a fault or a fire. The easement contract between Swissgrid and the landowners states the distances that need to be observed when planting trees.



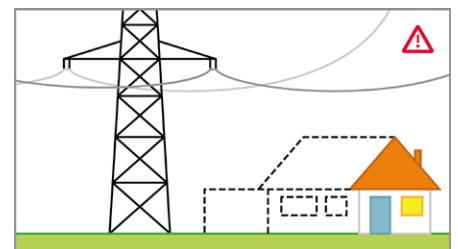
Particular caution is required when using large machinery near lines.

Do not use large agriculture and construction machinery, such as mobile cranes and snow blowers, near power lines where possible. Make sure that extensible elements, such as lifting platforms or telescopic arms, never move near lines – there is a considerable risk of electric shock. Please contact Swissgrid if you have any questions on using this type of machinery.



Statutory provisions and standards exist for planning and construction near lines.

Do you live near a line, and are you intending to develop your property? Are you planning a building or an infrastructure near a line, or are you responsible for the relevant construction activities? Please be aware that extensive regulations need to be followed in this regard. Important legal bases are the Ordinance on Electric Lines and Cables (LeV), the Ordinance on Protection against Non-Ionising Radiation (NISV) and the Ordinance on Occupational Health and Safety during Construction Work (BauAV).



Further information

You can find documents with more information on work, planning and construction near lines at www.swissgrid.ch/nearlines. Builders and architects can submit their concerns directly using a contact form.

Questions?

Give us a call at **058 580 21 11**.

You can also send us an e-mail at info@swissgrid.ch.

In the event of a fault or emergency, please call us on our **emergency telephone number 0800 00 45 45**.